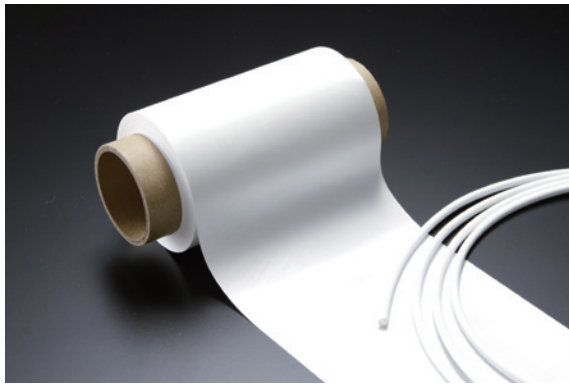


High air permeability, water repellency, flexibility
film, tube products.



C-Porous™ PTFE porous products

- PTFE porous film
- PTFE porous tube
- PTFE porous multi-lumen tube

OUTLINE

PTFE porous film, tube has breathability, moisture permeability and also has waterproof, water repellency performance. Useable in the chemical environment. The breathability is adjustable by changing the porosity.

*Optional rod molded and seat molded.

APPLICATIONS

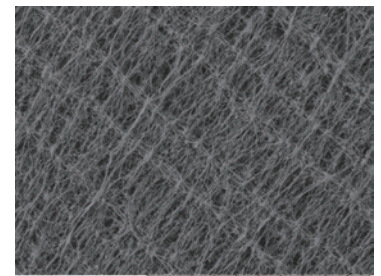
- PTFE porous films: filters / waterproof breathable membrane / electric wire coatings / cable protection / heat insulation
- PTFE porous tubes: filters / oxygen sensors / bubbling / degassing / inlet-exhaust equipment

CHARACTERISTICS

- Heat resistance
- Excellent flexibility
- Surface sliding ability
- Chemical resistance
- Water repellency
- Air permeability
- Weatherability



PTFE porous multi-lumen tube



Enlarged photograph (1000 magnification)

SPECIFICATION/PERFORMANCE

Product code	Shape	Size	Length (m)	Porosity (%)	Air permeability (sec/100cm ³)	Water porofness (kPa)
TEF-100	Tube	φ1 × φ2	10m	50	100	80
	Tube	φ2 × φ3	10m	50	60	80
	Tube	φ3 × φ4	10m	50	130	80
SEF-010	Film	0.1 × 100 (T × W)	10m~	65	18	120
SEF-010(HB)	Film	0.2 × 100 (T × W)	10m~	76	13	80

*Values shown in this table represent measurements and do not constitute guaranteed values.

*Air permeability is measured by a JIS P8117 compliant Gurley air permeability tester.

*Oil-repellent type and non-woven cloth composite type are also available. *We also offer some sizes other than those described above.

Chukoh Chemical Industries, Ltd.

To Contact us:

■ Int'l Trade Dept. ATT New Tower 10F, 2-11-7, Akasaka, Minato-ku, Tokyo 107-0052 Japan
Tel : +81-(0)3-6230-4417, Fax : +81-(0)3-6230-4446

■ Head Quarters ATT New Tower 10F, 2-11-7, Akasaka, Minato-ku, Tokyo 107-0052 Japan
Tel : +81-(0)3-6230-4414, Fax : +81-(0)3-6230-4413

Support mail : support@chukoh.co.jp



Caution

- Do not use in applications in contact with the human body such as medical care, etc.
- Dispose products in compliance with the related laws and regulations and absolutely do not incinerate them.
- Do not use the product higher than the maximum continuous service temperature.
- Carefully read the catalog, product safety data sheet (SDS), and fluoroplastic instruction manual in order to maintain functions essential to products and use products safely.

2019.06.01