

Ideal for heat retaining product  
in clean room!



C-Porous™ PTFE thick porous tube

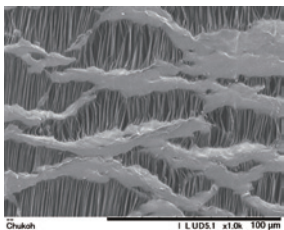
# TEF-100

## OUTLINE

This product is a thick porous tube.

By giving a porous structure to PTFE by expansion, it has excellent flexibility and heat insulating characteristics.

We can manufacture in a complex shape and split processing is also available.



Enlarged (×1000) photo of porous

## APPLICATIONS

- Heat insulating property
- Dimensional stability
- Flexibility
- Chemical resistance

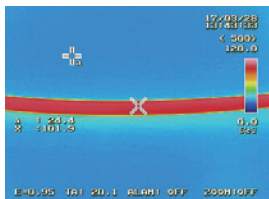
## GENERAL DIMENSIONS and CHARACTERISTICS

Product code	Nominal dimensions	Inner diameter (Tolerance) (mm)	Outer diameter (mm)	Wall thickness (mm)	Length (mm)	Porosity (%)
TEF-100	φ 10.0 × φ 17.0	10.0 (-0.7/+1.0)	17	3.5 (-0.5/+0.4)	500 (0/+100)	80 (±10)
	φ 13.7 × φ 20.7	13.7 (-0.7/+1.0)	20.7			
	φ 20.0 × φ 27.0	20.0 (-0.7/+1.0)	27			
	φ 26.4 × φ 33.4	26.4 (-0.7/+1.0)	33.4			

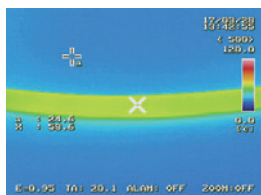
\* Values shown in this table represent measurements and do not constitute guaranteed values.

## HEAT INSULATING PROPERTY

\* The photograph showing the thermal insulation effect of the product by thermography



Not installed



installed

## Chukoh Chemical Industries, Ltd.

To Contact us:

■ Int'l Trade Dept. ATT New Tower 10F, 2-11-7, Akasaka,  
Minato-ku, Tokyo 107-0052 Japan  
Tel : +81-(0)3-6230-4424 Fax : +81-(0)3-6230-4412

■ Head Quarters ATT New Tower 10F, 2-11-7, Akasaka,  
Minato-ku, Tokyo 107-0052 Japan  
Tel : +81-(0)3-6230-4414, Fax : +81-(0)3-6230-4413

Support mail : support@chukoh.co.jp



## Caution

- Do not use for medical applications or other usages involving a contact with human body.
- Observe the related laws and regulations for disposal. Do not incinerate in any case.
- Do not use at the temperature exceeding the maximum service temperature.
- Please read the catalogue and product safety data sheet (SDS) on our website to maintain the original functions of product and ensure safe use.

2018.07.01